



INDIVIDUALISING CARE – CONSIDERING APPROCHES ACROSS SERVICES

**A/PROF NATASHA MICHAEL
DIRECTOR OF PALLIATIVE MEDICINE
CABRINI HEALTH
UNIVERSITY OF NOTRE DAME
MONASH UNIVERSITY**



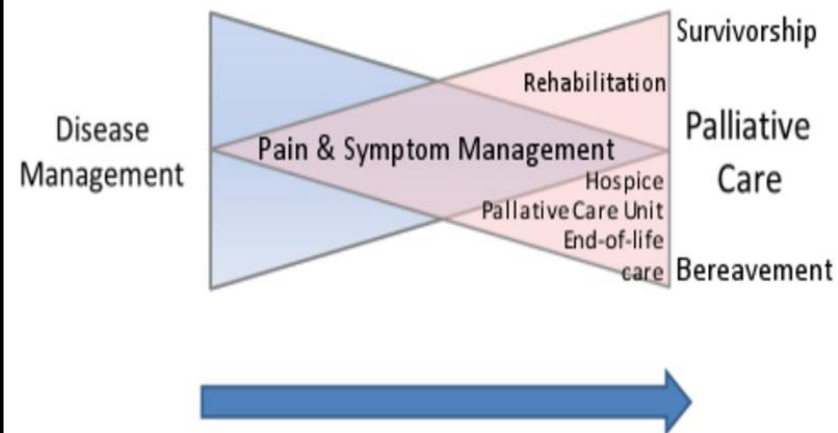
Introducing a model incorporating early integration of specialist palliative care: A qualitative research study of staff's perspectives

Palliative Medicine
1-10
© The Author(s) 2015
Reprints and permissions:
sagepub.co.uk/journalsPermissions.nav
DOI: 10.1177/0269216315598069
pmj.sagepub.com
SAGE



INTEGRATED MODEL OF CARE

Palliative Care-Enhanced Model



- More likely to be discharged home (7.9%, p=0.003), to aged care facility (2.5%, p=0.04)
- Less likely to die in the inpatient unit (10.4%, p<0.001)
- Increase in number of patient with non-malignant disease

- Considering Values in our Patient Interactions
- Exploring Concordance in Care
- Exploring and Responding to Suffering



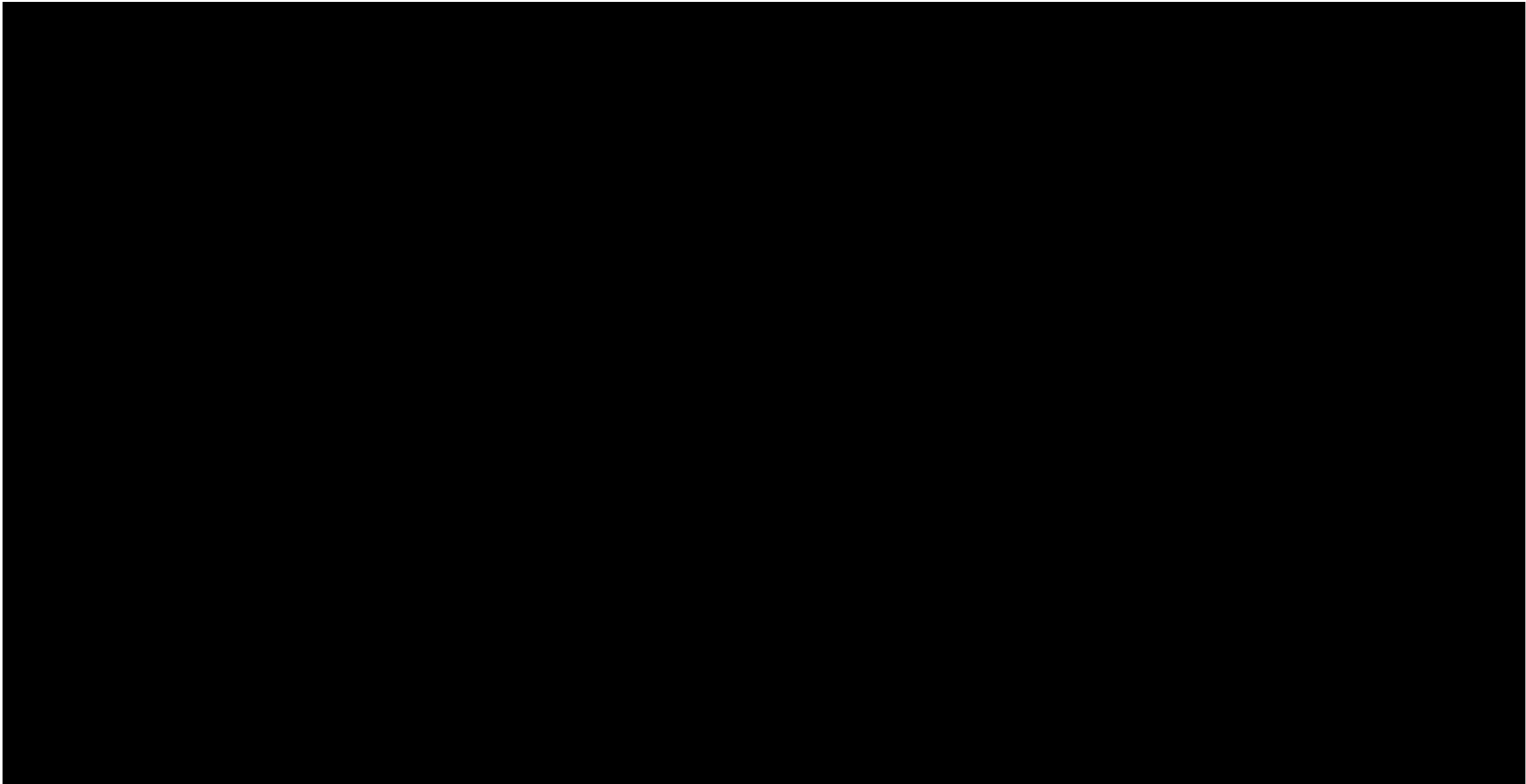
What Are Values and Why are they Important in Planning Care?



Personal values are individual conceptions of the desirables or overarching philosophies that guide our attitudes and behaviour and priorities in life

Should Care Planning address personal life goals and values or medical treatments?

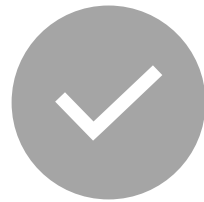
1. Does Care improve we understand individuals' personal values?
2. Could we use the video vignette methodology to demonstrate the benefits of value conversations



Patient–caregiver dyads advance care plan value discussions: randomised controlled cancer trial of video decision support tool



Participants numbered
113.



The Values video did not
improve overall ACP
document completion
(37.7% VDST; 36.7% UC).



The VDST improved ACP
document completion in
older patients (≥ 70)



VDST elicited greater
distress in patients



VDST improved patients
and caregiver ratings for
opportunities to discuss
ACP with health
professionals.

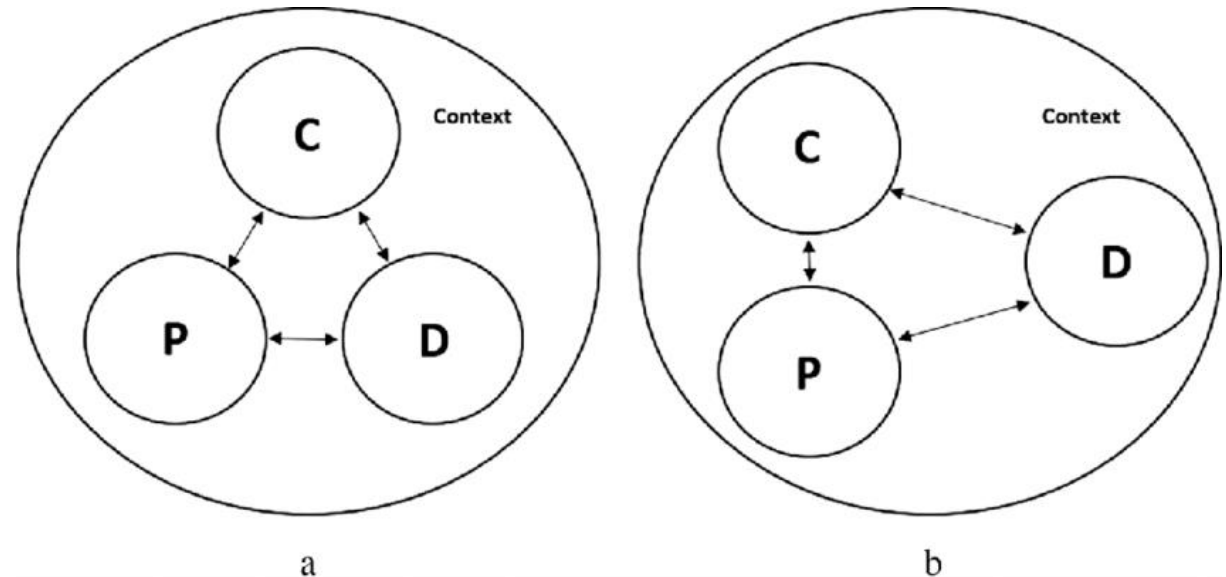


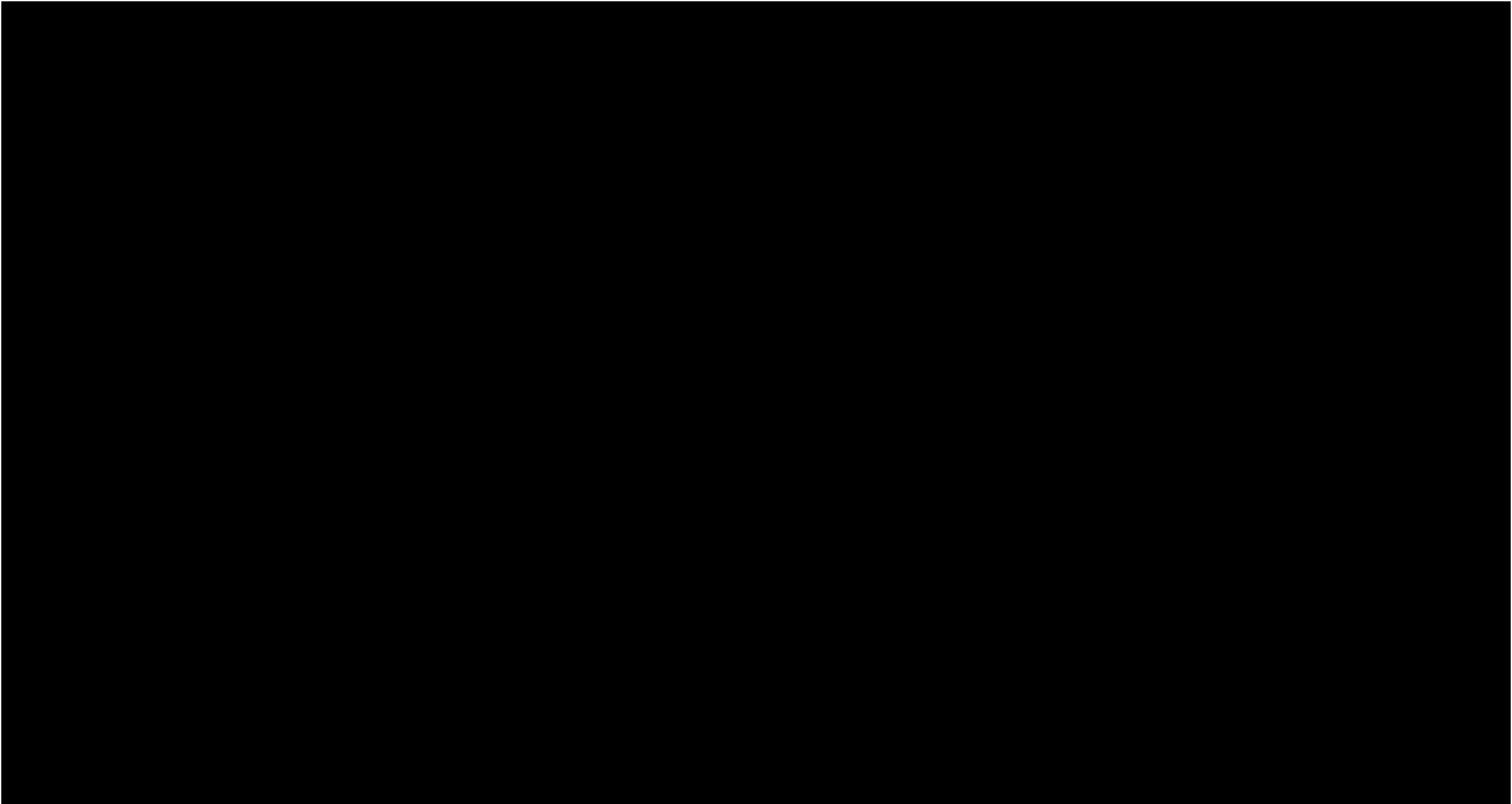
ACP improved
concordance in
communication

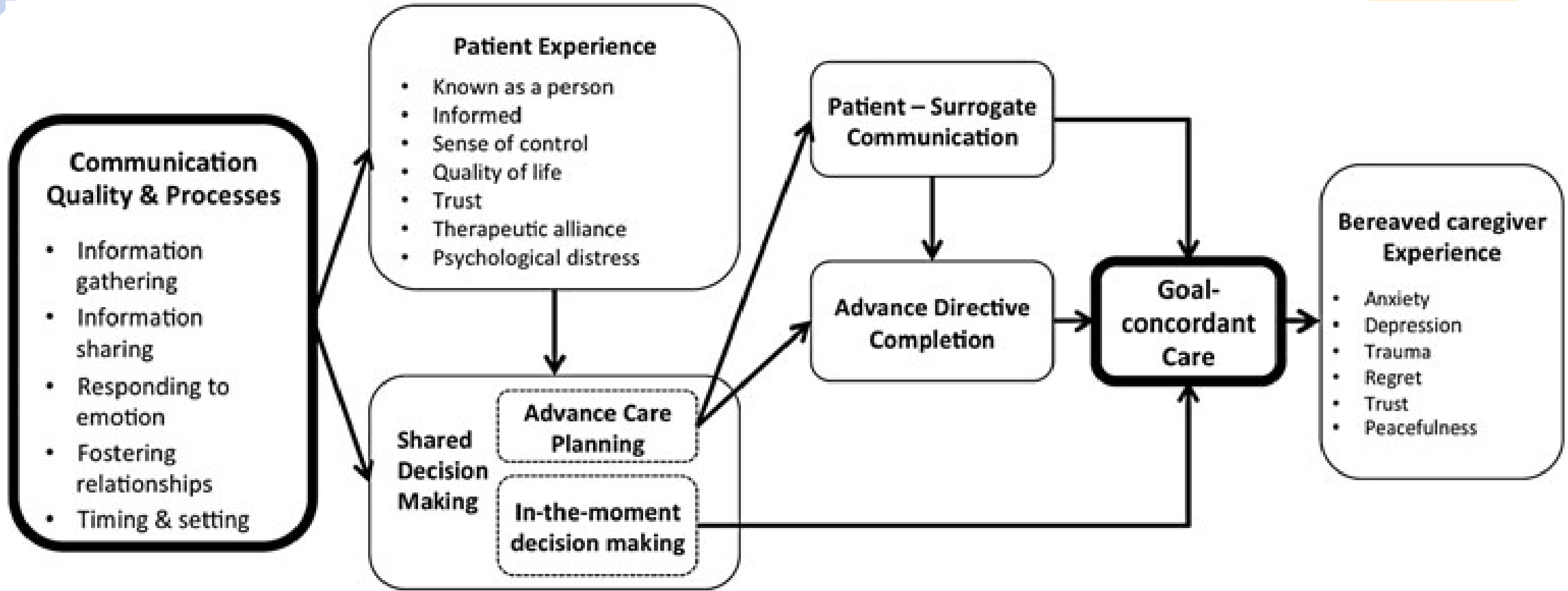
What are we failing to address and measure?

Concordance is an agreement or partnership between patient and clinician about the best treatment and care decisions, compatible with what the patient desires and is capable of achieving.

- Concordance in communication
 - Does it matter if a patient completes an ACP but there is a lack of value alignment and concordance with the MTDM?
 - Why is concordance important?
 - Family functioning
 - Stress within relationships
 - Bereavement outcomes
 - Sociodemographic factors
 - Longitudinal changes in how communication occurs

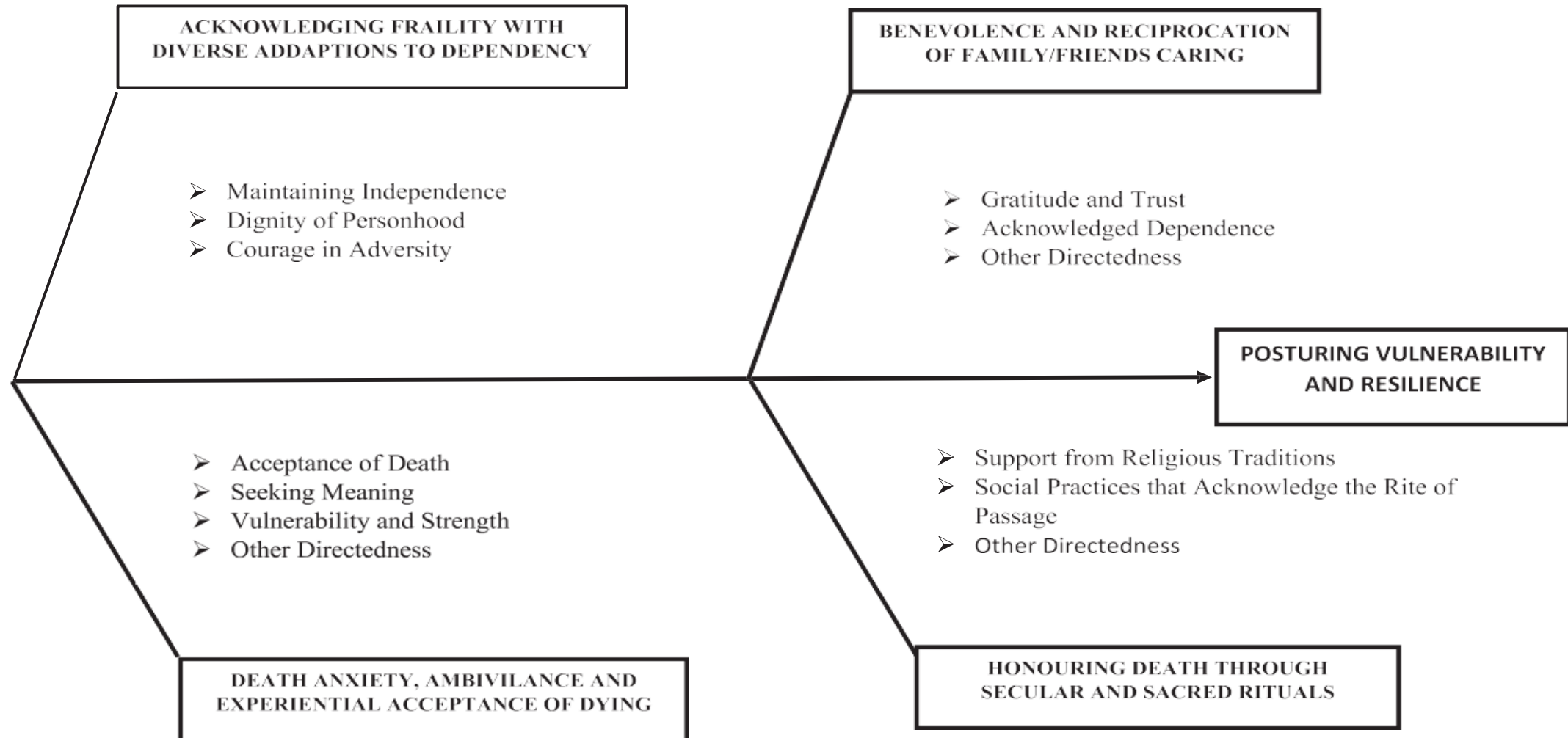






*adapted from Street et al, 2009

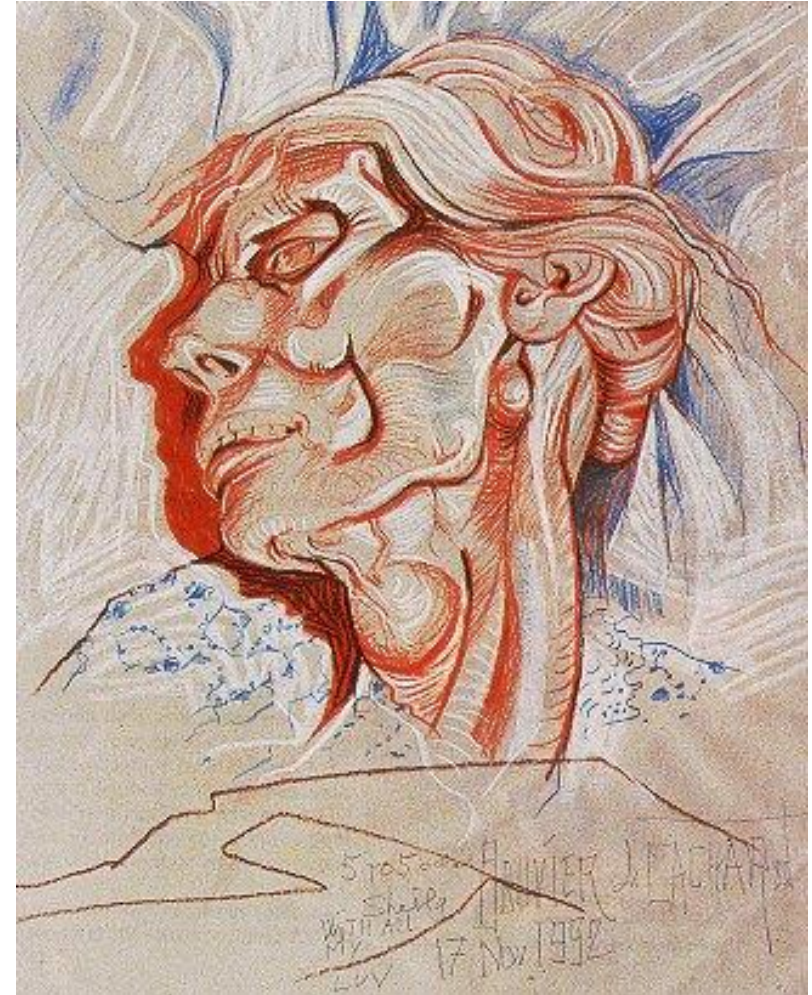
Qualitative Analysis of Values Statements



Dying brings decline in health, withdrawal from social networks, loss of normal roles, and the utter aloneness with the confrontation of the end of one's existence.

Existential distress at the end of life has been defined as hopelessness, burden to others, loss of sense of dignity, desire for death or loss of will to live and threats to self-identity.

Existential Loneliness has entered the literature and 'is understood as an intolerable emptiness, sadness, and longing, that results from the awareness of one's fundamental separateness as a human being.'



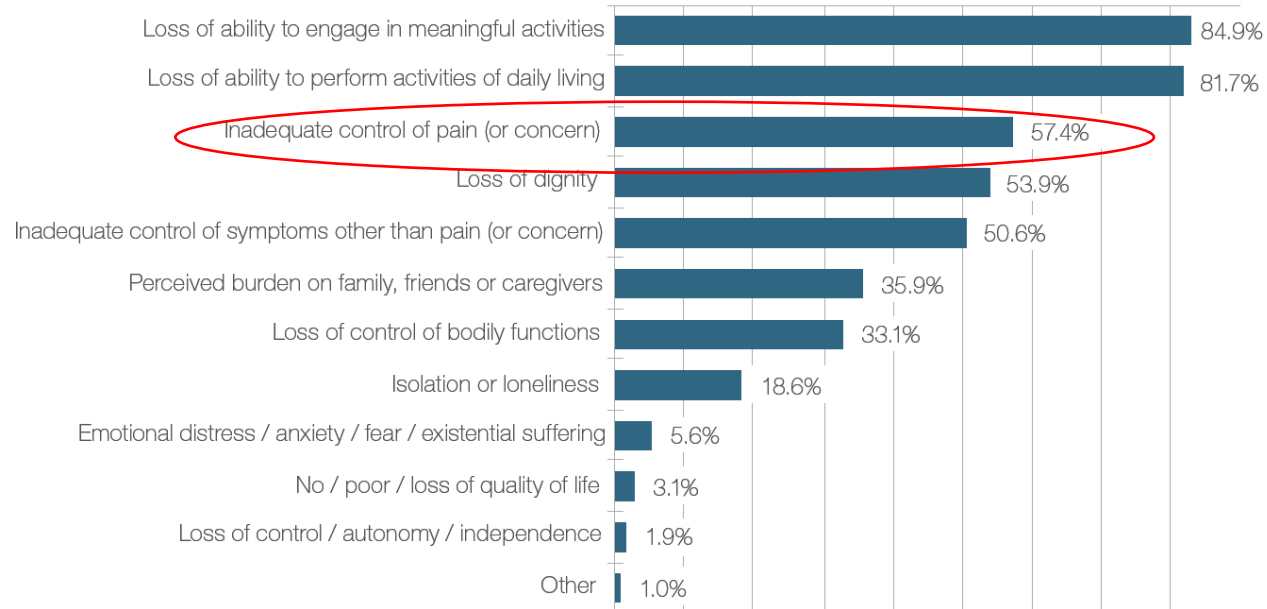
Results – Reasons for applying

Reasons for applying for assisted dying



$X^2(6, N = 344) = 108.77, p < .001$

 Nature of suffering of MAiD recipients, 2020



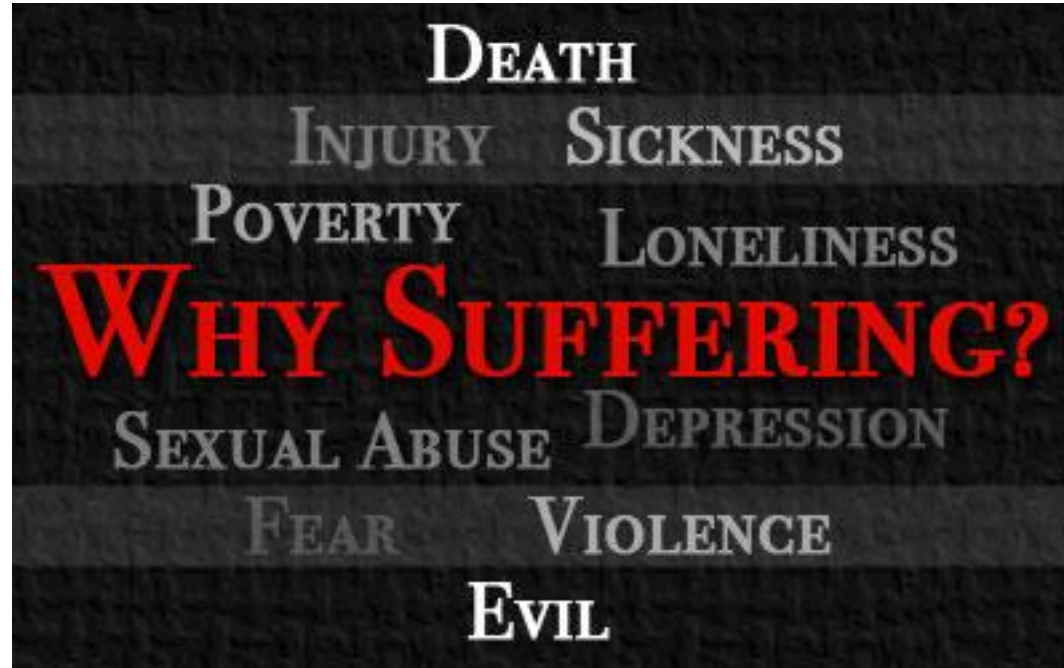
The Lost Art of Healing?

Healing is wholeness: When we think of healing, we need to understand what that is intended to mean. There is a tendency to think about it as being primarily of a spiritual nature.

When we seek healing, the healing of your soul. We seek the healing of souls

So how do we heal souls?

SUFFERING



Suffering can be defined as a state of severe distress associated with events that threaten the intactness of the person.

CASSELL 1991 NEJM

Healing Presence

Healing presence is the condition of being consciously and compassionately in the present moment with another or with others, believing in and affirming their potential for wholeness, wherever they are in life.

Healing Presence

You cannot *do* healing presence—you become healing presence, expressing it gently yet firmly in various ways:

- Listening, holding, talking, being silent, being still, being in your body, coming home to yourself, being receptive...

You can deepen your healing presence by:

- slowing down, doing only one thing at a time, reminding yourself regularly to come back to the present moment

You can encourage healing presence by being:

- appreciative, forgiving, humble, kind.



Why Healing Presence Matters

- When one is truly present to another there is:
 - An alleviation of loneliness
 - An affirmation of one's authentic self and invitation to wholeness
 - Potential for spiritual bonding
 - A deeper sense of our common humanity
 - A recognition and acknowledgement of the other as person
 - An invitation to self-transcendence
 - Possibility for greater self reflection & self revelation
 - Sharing on a deeper level, spiritual level