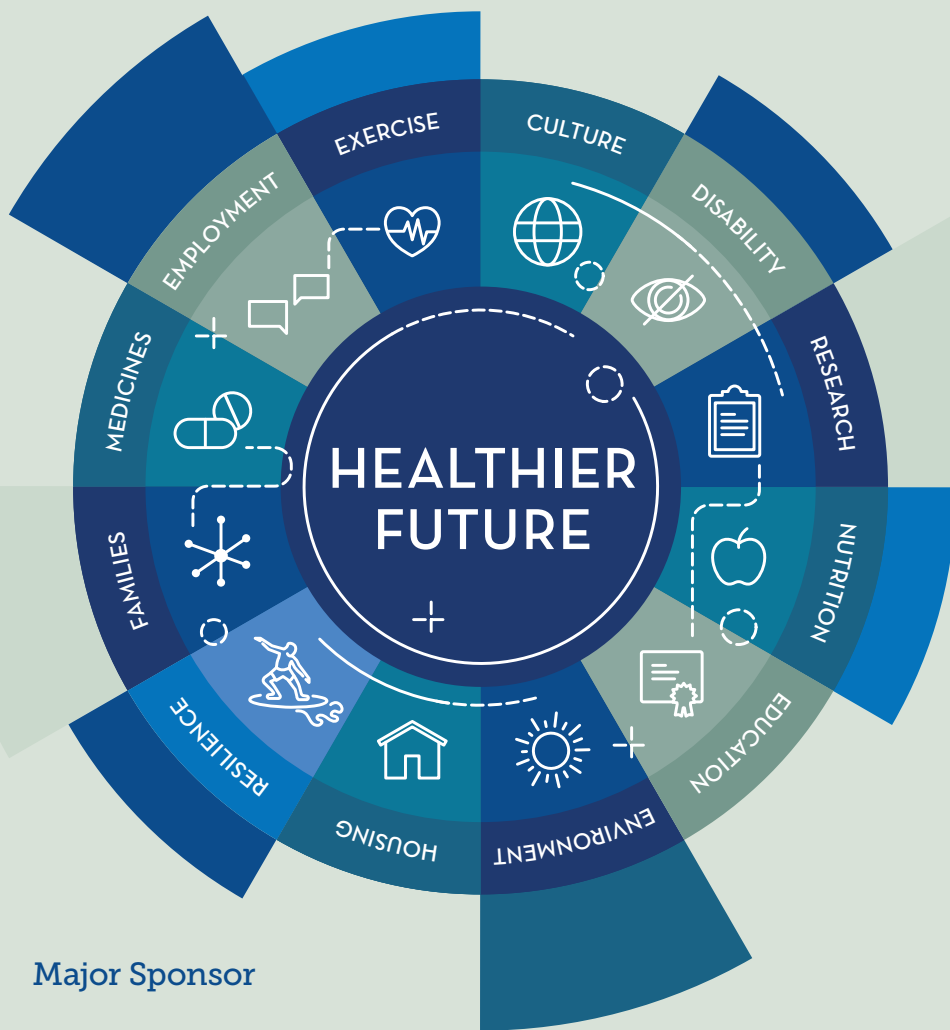


FRIDAY, 20 SEPTEMBER 2019

# HEALTH EQUITY RESEARCH SYMPOSIUM 2019

## “Breaking Down Silos”

You're invited to learn about evidence based processes and investigations that promote an equity lens on research. This includes strategies, policies, and practices that contribute to inclusive workplace environments and how organisations are translating evidence into practice to improve health outcomes for their communities. The format will include distinguished speakers, roundtable discussions, and workshops designed to challenge and expand your existing knowledge on health equity issues.



### When and where is this event?

September 20 from 9-5pm.  
Melbourne Marriott Hotel,  
Corner Exhibition & Lonsdale  
Streets, Melbourne, VIC 3000

### Who should attend?

Those who are interested in contributing to the knowledge base of service providers and research institutes in administering to at-risk and vulnerable populations. This event is intended for CHA members and non-members interested in advancing health equity, diversity, and inclusion in health. It extends to researchers, health workers, social services, disability, housing and urban development, health managers, consumer advocates, and those with an interest in how the social determinants of health impact health equity.

### Why is this event taking place?

This event is a unique opportunity to meet with peers and experts from across disciplines who share equity-related concerns and interests. It is designed for those who conduct research and deliver services to the most underserved and vulnerable groups.

### Interested?

Please register via the registration form on page four.

Major Sponsor



[www.cha.org.au](http://www.cha.org.au)



CATHOLIC HEALTH  
Australia

# HEALTH EQUITY RESEARCH SYMPOSIUM 2019

## SPEAKER INFORMATION

### Keynote

#### DR REBECCA HUNTLEY

Researchers / Author  
Broadcaster / Lecturer



Dr Rebecca Huntley is one of Australians foremost researchers on social trends.

For nearly nine years, Rebecca was the Director of The Mind & Mood Report, Australia's longest running social trends report.

She currently heads Vox Populi research. She is the author of numerous books including *Still Lucky: why you should feel optimistic about Australia and its people* (Penguin 2017).

Rebecca is a broadcaster with the ABC and presents *The History Listen* each week on RN.

She is on the Artistic Advisory Board of The Bell Shakespeare Company, an adjunct senior lecturer at the School of Social Sciences at The University of New South Wales and on the board of The Whitlam Institute.

#### DR BRENTON PROSSER

Director of Research  
Catholic Social Services  
Australia / Adjunct  
research fellow at the  
Australian National  
University and Visiting  
fellow with the University  
of Sheffield



As Director of Research, Brenton's role is to develop and deliver high quality research strategy and outcomes to support the policy, advocacy and public awareness initiatives of CSSA. His research experience includes academic, political, public and private sectors, with a unique perspective that links high-level policy design to mixed method evidence production and service delivery evaluation.

Prior to joining CSSA, Brenton was Director, Public Policy with Nous Group. He also has over two decades of research experience in leading Australian, UK and US universities. Brenton is a recognized expert in Attention Deficit Hyperactivity Disorder, mental health, education and policy, while he has also published extensively in the fields of governance and advocacy.

Brenton has worked at the highest levels of Australian government policy-making. His past professional policy development and analysis work spans the fields of aged care, education, emergency management, home care, mental health and public health. Brenton is currently an adjunct research fellow at the Australian National University and visiting fellow with the University of Sheffield.

#### JENNIFER DOGGETT

Chair of the Australian Healthcare  
Reform Alliance / Editor of Croakey  
Consultant



Jennifer Doggett is Chair of the Australian Healthcare Reform Alliance, an editor of the health blog Croakey and a consultant working in the health sector for a number of professional, industry and consumer groups. She has previously worked within the Federal Department of Health and as a political advisor on health and social policy issues.

Jennifer is regular commentator on health issues in the media and the author of recent papers on health financing, primary health care and mental health." She is a contributing author of the books "More than luck: ideas Australia needs now", "Pushing our luck: ideas for Australian progress" and "Creating and Implementing Public Policy."

Please see our [website](#) for updates on speakers and the final program.

# HEALTH EQUITY RESEARCH SYMPOSIUM 2019

## SPEAKER INFORMATION

### DR BERNADETTE ALIPRANDI-COSTA

Manager, Safety and Quality Improvement Systems and Intergovernmental Relations / Australian Commission on Safety and Quality in Health Care



Bernadette is the Manager, Safety and Quality Improvement Systems and Intergovernmental Relations at the Australian Commission on Safety and Quality in Health Care (the Commission). The Commission is an Australian government agency funded by the Council of Australian Governments (COAG) and all states and territories that leads and coordinates national improvements in safety and quality of health care based on best available evidence. The Commission works in partnership with the Australian Government, state and territory governments, private sector, patients, clinicians, managers and health care organisations.

Bernadette holds a PhD in health outcomes research from the University of Sydney and has lead programs of work in the hospital setting; developing quality reporting frameworks; designing and implementing system performance reporting programs; designing and managing clinical quality registries and designing and implementing government funding models in the health and vocational education and training sectors. Currently, Bernadette is leading the revision of the Australian Framework for Clinical Quality Registries and the development and implementation of the National Clinical Trials Governance Framework which is a key element of the COAG Health Council's revitalised clinical trials agenda.

### MAIA AMBEGAOKAR

Director, Consulting Social Ventures Australia



Maia has a MBA from the London Business School, a MSc-Medical Demography from the London School of Hygiene & Tropical Medicine and a BA-Government from Cornell University.

Maia is Director, Consulting at Social Ventures Australia (SVA). Prior to joining SVA, Maia worked as a management consultant and policy adviser in health, international development and women's rights. She has held executive and managerial positions at Abt Associates in Australia, Planned Parenthood in the United States and the World Health Organisation in Switzerland. Maia served as a Peace Corps volunteer in Togo and has worked in over 20 low and middle-income countries in Africa and Asia-Pacific. Maia's health sector work has covered community-based service delivery, health promotion, integrated social and health care systems and hospital care. She has led consulting teams analysing health services and markets and has facilitated participatory health policy and planning in several income-constrained settings. She has advised senior health executives on sector management, including hospital governance reforms, strengthening implementation planning and cross-government linkages. She has designed and implemented clinic and community health worker supervision systems, including health worker peer-to-peer training networks, and has a particular interest in participant-led (or 'co-design') assessment and planning.

### DAVID ABBOTT

Principal Research Scientist, Medical Research future Fund (MRFF) / Commonwealth Department of Health



Eighteen months ago, David joined the Commonwealth Department of Health as the Principal Research Scientist for the Medical Research future Fund (MRFF). Prior to this he was employed at the National Health and Medical Research Council (NHMRC) for over ten years; most recently as advisor to the CEO, but he also worked on NHMRC funding schemes (peer review) and managed the development of a number of key NHMRC evidence statements and guidelines. In 2016, David was seconded to the Department of Health for six months to work on the National Health Genomics Policy Framework, which was released in October 2017. David's qualifications include a PhD from ANU in molecular biology. Before transitioning to policy development/research funding he spent thirteen years as a research scientist at CSIRO in the field of virology and gene silencing (RNA interference).

Please see our [website](#) for updates on speakers and the final program.

# HEALTH EQUITY RESEARCH SYMPOSIUM 2019

## SPEAKER INFORMATION

---

### DR CARRIE LETHBORG

Manager of Inclusive Health Research, St. Vincent's Health Australia



Dr Carrie Lethborg is the Manager of Inclusive Health Research (SVHA). With 30 year's experience as an oncology social worker and researcher, Dr Lethborg's clinical experience is significant, however her commitment to social justice has found the focus of her career direction towards research and policy development. In 2009 Dr Lethborg was named Catholic Health Australia's inaugural Emerging Leader of the Year.

---

### NICOLE JAHN

Director of Projects and Technology, St. John of God Health Care and Community Services



Nicole Jahn is currently the Director of Projects and Technology for St John of God Health Care Community Services. She was responsible for the Project Management of Project Enable and currently is leading a project to develop a further ten homes for people with intellectual disability.

Nicole has over 20 years' experience working on technology projects, but has a unique background having started her career as a Registered Nurse.

---

### BELINDA CLARKE

Social Impact Program Director, CatholicCare Tasmania



Belinda is a recognised leader in social innovation and strategy and is committed to driving complex social change, specifically for individuals and communities where people experience entrenched disadvantage. Belinda has diverse executive and leadership across the not-for-profit, healthcare, community, social services, education, and business sectors and is currently the founding director of The Social Impact Program for CatholicCare Tasmania and Chair of All Round Health and Community Care, a not-for-profit holistic health care service which supports marginalised Tasmanians.

---

### DR SOPHIE HICKEY

Postdoctoral Research Officer, Mater Research and Charles Darwin University



Dr Sophie Hickey is a mixed-methods early career researcher with a focus on social inequalities of health and workforce development in the Indigenous context. Her background is Sociology and Public Health and works in health service research. She currently manages a large longitudinal cohort study of Indigenous mothers and children designed to provide feedback to local service providers on best practice maternity care, that has seen a profound reduction in preterm birth for women accessing the new model of care. Sophie's particular research interest is translating evidence into practice to improve outcomes for minority groups, and has demonstrated commitment to increasing the research capacity of emerging Indigenous researchers and cultural safety of non-Indigenous health providers.

---

Please see our [website](#) for updates on speakers and the final program.

# HEALTH EQUITY RESEARCH SYMPOSIUM 2019

## SPEAKER INFORMATION

### DR URSULA STEPHENS

---

CEO, Catholic Social Services Australia



Ursula has a long personal and professional commitment to the social services sector. She is a passionate advocate for social inclusion and the not for profit sector, having served in the Australian Senate for twelve years, including as Parliamentary Secretary to the Prime Minister for Social Inclusion and the Voluntary Sector, negotiating the National Compact and supporting efforts from government and the sector to establish the Australian Charities and Non Profit Commission.

Ursula has been an adult educator, senior public servant, small business owner and social entrepreneur. She chairs the Code Authority of FIA, Fundraising Institute Australia, is a Visiting Fellow and Director at Australian Centre for Philanthropy and Non Profit Studies, at QUT and served on the Board of the School for Social Entrepreneurs Australia for three years.

Ursula holds a doctorate in Public Administration and brings strong leadership and governance experience to her role. She has a deep understanding of Catholic Social Teaching principles that underpin the work of our Social Services member network. She is a thought leader in the areas of social innovation and entrepreneurship. Born in Ireland, Ursula's joys are Irish music, poetry and literature.

---

### MATTHEW KEARNEY

---

Director of Mission, St. Vincent's Health Network Sydney



Matthew has been Director of Mission at St Vincent's Health Network Sydney since 2016. This role covers St Vincent's Hospital Sydney, Sacred Heart Health Service, St Joseph's Hospital Auburn and more recently St Vincent's Correctional Health at Parklea. The Network recently developed a strategy for inclusive health. Previously he was Mission Executive at St Vincent's Private Hospital Brisbane and Director of Campus Ministry at St Joseph's Nudgee College. Through his adult life, Matt has been involved in various ministries and services which connect with vulnerable people in the community. He is also involved in supporting research investigating spiritual care practice. Matt holds Master's degrees in theology, counselling and will complete an MBA in 2020.

### RUTH KNIGHT

---

Project Manager, CatholicCare



Ruth Knight has 25 years' experience working across the health and social services sector and holds a Masters of Education (Leadership and Management), positioning her well for collaborative cross sector leadership and navigation. As a clinician, she has seen firsthand how a person's social determinants impact their health equity and advocates for collaborative approaches that enable coordinated efforts across communities at all levels of the system.

In her current role she is the Project Manager representing a collaboration of three Catholic service arms (Cabrini Outreach, CatholicCare and Catholic Education Melbourne) to develop a place based community co designed, collective impact response to disrupt disadvantage in Melton South. Ruth is on secondment from Cabrini Outreach where she was the Manager, National Partnerships and is currently employed by CatholicCare on behalf of the collaboration.

---

Please see our [website](#) for updates on speakers and the final program.

# HEALTH EQUITY RESEARCH SYMPOSIUM 2019

## FRIDAY, 20 SEPTEMBER 2019

9.00am-9.15am	<b>WELCOME</b> <i>Ursula Stephens</i> – CEO Catholic Social Services Australia to act as Master of Ceremonies <i>Vanessa Frlan</i> – General Manager – National Partnership, HESTA
9.15am-10.15am	<b>SESSION ONE</b> <b>Keynote:</b> <b>“Still fair? Still lucky?: Understanding Australia and Australians”</b> <b>Presenter</b> <i>Rebecca Huntley</i> – Social Researcher
10.15am-10.45am	<b>MORNING TEA</b>
10.45am-12.15pm	<b>SESSION TWO</b> <b>Measuring and Assessing Outcomes</b> <b>Social Ventures Australia</b> 30min <i>Maia Ambegaokar</i> – Director, Consulting <b>Panel Discussion</b> <b>Catholic Social Services Australia</b> <i>Brenton Prosser</i> – Director Research <b>Australian Healthcare Reform Alliance</b> <i>Jennifer Doggett</i> – Chair <b>Social Ventures Australia</b> <i>Maia Ambegaokar</i> – Director, Consulting <b>Roundtable Exercise</b> 30min
12.15pm-1.00pm	<b>LUNCH</b>
1.00pm-2.30pm	<b>SESSION THREE</b> <b>Concurrent session</b> <b>1. Policy Makers Response to Incorporating Health Equity Principles in Research and Service Delivery</b> <b>Australian Healthcare Reform Alliance</b> <i>Jennifer Doggett</i> – Chair AHCRA <b>Medical Research Future Fund (MRFF)</b> <i>Dr. David Abbott</i> – Principal Research Scientist, Commonwealth Department of Health <b>Australian Commission on Safety and Quality in Health Care</b> <i>Bernadette Aliprandi-Costa</i> – Manager, National Clinical Trials Governance Framework <b>2. Cross Sector Collaboration in Responding to Community Needs</b> <b>Catholic Social Services Australia</b> <i>Brenton Prosser</i> – Director Research, CSSA <i>‘Designing for equity outcomes within integrated multi-service school models’</i> <i>Matthew Kearney</i> – Director of Mission, St. Vincent’s Health Network Sydney <i>‘Act to End Street Sleeping Collaboration – A Case Study’</i>
2.30pm-3.00pm	<b>AFTERNOON TEA</b>
3.00pm-4.30pm	<b>SESSION FOUR</b> <b>Around the Sector</b> <b>Presenter</b> <i>CHA members</i> Roundtable presentations on research projects happening across the Catholic provider health and social services sectors. <b>Please see pages 7-8 for featured presentations</b>
4.30pm-5.00pm	<b>Actions and Conclusion</b>
5.00pm-6.30pm	<b>NETWORKING DRINKS</b>

Please see our [website](#) for updates on speakers and the final program.

# HEALTH EQUITY RESEARCH SYMPOSIUM 2019

## SESSION FOUR

### Around the Sector Presentations from CHA members

*Audience members will have the opportunity to select **THREE** 20 minute featured presentations from Catholic health and social services researchers to join for a roundtable discussion. Sign up for each presentation will be available on the day.*

#### Using service innovation, research and advocacy to address inequity in health outcomes for the most disadvantaged: “The St Vincent’s Health Australia Inclusive Health Program”

**Dr. Carrie Lethborg – Manager of Inclusive Health Research, St. Vincent’s Health Australia**

In 2015, St Vincent’s Health Australia (SVHA) made a formal and ongoing commitment to 5 vulnerable patient populations in the creation of the SVHA Inclusive Health Program (IHP), pledging \$5 million per year(ongoing) to address particular needs of:

- People with mental health concerns
- People with drug and alcohol addiction
- People with health concerns who are homeless
- Aboriginal and Torres Strait Islander People
- People with health concerns who are prisoners

Four years down the track we have funded close to 150 projects, developed a range of partnerships and are linking projects across the SVHA network.

This presentation will offer an overview of the IHP program, highlighting three projects of note that illustrate the benefit of reviewing patient data for prevalence and characteristics of the vulnerable patient population, the trial of an innovative program changing the way we work with people with addiction and a screening program for anal cancer.

#### Evaluating the impact of Smart Home Technology on the lives of People with Complex Intellectual Disability: A Blueprint for the Future

**Nicole Jahn – Director of Projects & Technology, St John of God Health Care Community Services**

In 2019, St John of God Accord completed development of a home in Brighton East, Melbourne. “Project Enable” involved a collaboration with leading technology companies to trial the latest smart home and other technologies to provide greater choice, dignity, and independence for residents with a complex intellectual disability. The focus was not only the physical design of the home but also on technology to enhance residents’ daily lives.

The technology is designed to limit restrictive practices (e.g. Access control for clients who will abscond with no danger awareness, control access to the pantry using facial recognition for those clients with chocking risks while

not restricting others). Other technology provides greater structure on daily events by advising clients in advance of their meals, activities and carers that will be assisting, as well as assistance with simple daily routines.

Deakin University are evaluating the effectiveness of the technology on the residents.

SJOG Accord hope the research will demonstrate that the house and the technology solutions improve the quality of life for the residents and be a model for the future of disability accommodation, particularly for those with complex intellectual disability.

#### Catholic Alliance Disrupting Disadvantage in Melton

**Ruth Knight – Project Manager, CatholicCare**

Melton Shire on the rural fringe of Melbourne, contains areas of entrenched disadvantage with limited support services available in the local community. Data insights show that the corridor is growing rapidly, displaying an urgent need to take action and improve community wellbeing for current and future generations.

Research shows that in order to shift entrenched disadvantage in communities, long term coordinated efforts are required across community at many levels. Three Catholic service arms (Cabrini Outreach, CatholicCare and Catholic Education Melbourne) are

collaborating to disrupt disadvantage in Melton South – using a place based, community co-designed approach to jointly create interventions, services and programs that are accessible and non-stigmatising for children and families. St Anthony of Padua Catholic Primary School in Melton South is a community partner for this project. Still in the early days, collaborators are currently using co design to understand what is holding disadvantage in place for vulnerable Melton South families and to identify and test emerging opportunities and prototypes.

*Feature Presentations continue on the next page.*

# HEALTH EQUITY RESEARCH SYMPOSIUM 2019

## SESSION FOUR

### Around the Sector Presentations from CHA members

*Audience members will have the opportunity to select **THREE 20 minute featured presentations** from Catholic health and social services researchers to join for a roundtable discussion. Sign up for each presentation will be available on the day.*

#### A Social Impact Collaboration

**Belinda Clarke – Social Impact Program Director, CatholicCare Tasmania**

The Catholic Social Impact Program (SIP) was founded by the Archdiocese of Hobart, CatholicCare Tasmania and Centacare Evolve Housing to facilitate partnerships across a range of entities, services and ministries for long term social impact. The areas SIP focuses on are identified through evidence and research, in particular the Dropping Off The Edge report. SIP has a range of partners including Calvary Health Care, Catholic Education Tasmania,

parishes, the University of Tasmania and Councils. SIP aims to amplify existing assets through more effective linkages as well as to co-create new innovations and disruptions that drive positive change and strengthen individual, family and community wellbeing. The work focuses on delivering the Church's mission to enable human flourishing for all.

#### Responding to the needs of Aboriginal and Torres Strait Islander people: working towards goals of health equity

**Dr Sophie Hickey – Mater Research and Charles Darwin University**

Prevention of avoidable preterm birth in Aboriginal and Torres Strait Islander families is a major public health priority in Australia. Evidence about effective, scalable strategies to improve maternal and infant outcomes is urgently needed. In 2013, a multiagency partnership between two Aboriginal Community Controlled Health Organisations and a tertiary maternity hospital co-designed a new service aimed at improving access, engagement and cultural safety in maternity care for Aboriginal and Torres Strait Islander women and families at the Mater Mothers Hospital. The Indigenous Birthing in an Urban Setting Study is a 5 year NHMRC funded partnership study evaluating this transformative new model of care. We found women receiving the new service were less likely to give birth to a preterm infant than women receiving standard care. After controlling for confounders, the new service significantly reduced the

odds of having a preterm birth. The short-term results of this service redesign send a strong signal that the preterm birth gap can be reduced through targeted interventions that increase Indigenous governance of, and workforce in, maternity services and provide continuity of midwifery carer, an integrated approach to supportive family services and a community-based hub. From this study, we identified a need and opportunity to describe, measure and improve the cultural security of the hospital at the organisational level. This second study uses a pre/post mixed methods design to capture organisational responses towards addressing the six new actions in the current National Safety and Quality Health Service Standards designed to specifically address the unique and diverse needs of Aboriginal and Torres Strait Islander people.



# HEALTH EQUITY RESEARCH SYMPOSIUM 2019

## REGISTRATION FORM

### RSVP 13 September 2019

Please complete all sections clearly in capital letters.

TITLE \_\_\_\_\_ FIRST NAME \_\_\_\_\_ LAST NAME \_\_\_\_\_  
 FACILITY/ORGANISATION \_\_\_\_\_  
 POSITION IN ORGANISATION \_\_\_\_\_  
 BUSINESS ADDRESS \_\_\_\_\_  
 STATE \_\_\_\_\_ POST CODE \_\_\_\_\_  
 PHONE \_\_\_\_\_ MOBILE PHONE \_\_\_\_\_  
 EMAIL \_\_\_\_\_  
 SPECIAL REQUIREMENTS (Dietary or otherwise) \_\_\_\_\_

I DO NOT consent to my details being circulated via the delegate list. (Please tick box)

### REGISTRATION FEE

Please tick the box to indicate the amount you are paying. If your paying group is a member of the Catholic GST Religious Group you should NOT pay GST to Catholic Health Australia.

#### Early Bird Prices

(For registrations received by 23 Aug 2019)

CHA MEMBER \_\_\_\_\_ \$175.00 (CRG)   
 CHA MEMBER \_\_\_\_\_ \$192.50 (GST)   
 NON Member \_\_\_\_\_ \$200.00 (GST)

#### Full Price

(For registrations received after 23 Aug 2019)

CHA MEMBER \_\_\_\_\_ \$195.00 (CRG)   
 CHA MEMBER \_\_\_\_\_ \$214.50 (GST)   
 NON Member \_\_\_\_\_ \$220.00 (GST)

### PAYMENT DETAILS

#### Payment by Direct Debit

Catholic Health Australia | Bank: National Australia Bank | Account Number: 50774 9125 | BSB: 082 968  
 (Please quote your surname and organisation)

#### Payment by Credit Card

CARDHOLDER'S NAME (please print) \_\_\_\_\_

Mastercard

Visa

Credit Card Number

Credit Card Expiry Date   /   Signature

TOTAL AMOUNT TO AUTHORISE \$ \_\_\_\_\_

EMAIL ADDRESS FOR CREDIT CARD RECEIPT \_\_\_\_\_

**THIS REGISTRATION FORM IS A TAX INVOICE ABN 30 351 500 103 Please retain this as your tax invoice**

**REGISTRATION FORM OR QUERIES TO** Deborah Reynolds | [deborahr@cha.org.au](mailto:deborahr@cha.org.au) | 02 6203 2777

*Cancellation Policy:* No refunds will be given for registration cancellations received after Monday 2 September 2019.

*Disclaimer:* The registration brochure is correct at time of printing. In the event of unforeseen circumstances, the organisers reserve the right to delete or alter the program where necessary. Please note: places for the 2019 Research Symposium are limited. CHA reserves the right to close registration at the time capacity for the event is reached.